

NOTICE OF NOTAM PUBLICATION

To: PHX NOTAM NOTIFICATION GROUP DISTRIBUTION

Date: 06/14/2024

From: DAGOBERTO HINOJOS
Aviation Supervisor II-Operations, (602) 273-2008

Subject: **PHX NOTAM #241-2024**

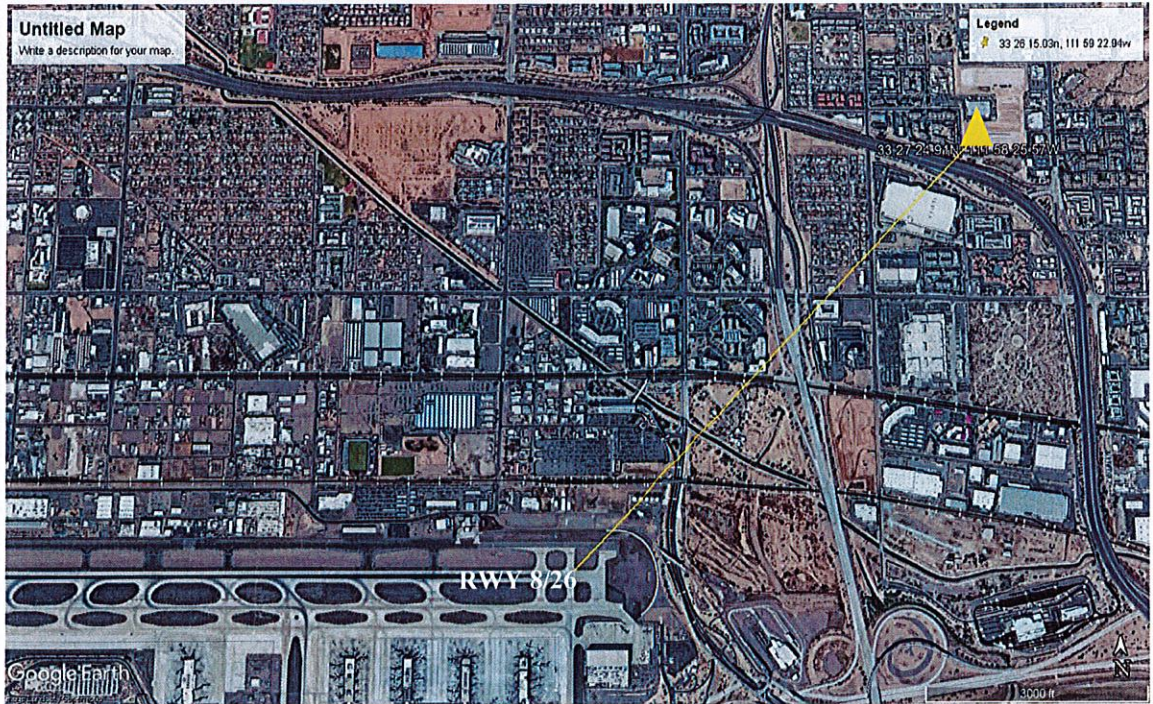
FAA NAS NOTAM # 06/058

OBSTRUCTION – 300' CRANE

USE CAUTION FOR A FLAGGED AND LIGHTED TOWER CRANE 300' AGL, 1,500' MSL AND LOCATED 8,060 FEET NORTHEAST OF THE RUNWAY 26 THRESHOLD.

EFFECTIVE: **MONDAY, JUNE 17, 2024 FROM 0600 (L) UNTIL
FRIDAY, DECEMBER 13, 2024 AT 2359 (L).**

**CRANE
COORDINATES:
33-27-24.91N
111-58-25.57W**



Dago Hinojos

DAGOBERTO HINOJOS
Aviation Supervisor II- Operations

Pro Steel Erectors- Tara Kratz (602 694 6753)
2024-awp-5743-oe
(8,060' NE RWY 26 & 1.33NM NE RWY 26)

PHX NOTAMS IN EFFECT: # 002-2024, 003-2024, 004-2024, 005-2024, 006-2024, 007-2024, 008-2024, 009-2024, 010-2024, 011-2024, 012-2024, 013-2024, 014-2024, 015-2024, 016-2024, 017-2024, 021-2024, 052-2024, 071-2024, 072-2024, 073-2024, 169-2024, 176-2024, 216-2024, 225-2024, 227-2024, 232-2024, 234-2024, 235-2024, 236-2024, 237-2024, 238-2024, 239-2024, 240-2024 AND 241-2024.

TO VIEW ALL CURRENT NOTAMS FOR PHX PLEASE VISIT: <http://notams.aim.faa.gov/notamSearch/> (USE LOCATION SEARCH WINDOW AND TYPE IN PHX)

PHX USE ONLY:

REVIEWED BY: *[Signature]*

CANCELLED ON: DATE:

TIME:

FSS Operator Initials:



Mail Processing Center
 Federal Aviation Administration
 Southwest Regional Office
 Obstruction Evaluation Group
 10101 Hillwood Parkway
 Fort Worth, TX 76177

Aeronautical Study No.
 2024-AWP-5743-OE

Issued Date: 06/13/2024

Scott Sappington
 Pro Steel Erectors II Inc
 6714 W Frier Dr suite 104
 Glendale, AZ 85303

****DETERMINATION OF NO HAZARD TO AIR NAVIGATION FOR TEMPORARY STRUCTURE****

The Federal Aviation Administration has conducted an aeronautical study under the provisions of 49 U.S.C., Section 44718 and if applicable Title 14 of the Code of Federal Regulations, part 77, concerning: *FD*

MON 6/17 @ 0600 - DEC 13 @ 2359

Structure: Crane iron mtn ph 3 point 2
 Location: phoenix, AZ
 Latitude: 33-27-24.91N NAD 83
 Longitude: 111-58-25.57W
 Heights: 1200 feet site elevation (SE)
 300 feet above ground level (AGL)
 1500 feet above mean sea level (AMSL)

*8,060' NE Rwy 24
 1,333' NM NE Rwy 24*

This aeronautical study revealed that the temporary structure does exceed obstruction standards but would not be a hazard to air navigation provided the condition(s), if any, in this letter is (are) met:

****SEE ATTACHMENT FOR ADDITIONAL CONDITION(S) OR INFORMATION****

This determination is based, in part, on the foregoing description which includes specific coordinates, heights, frequency(ies) and power. Any changes in coordinates, heights and frequencies or use of greater power, except those frequencies specified in the Colo Void Clause Coalition; Antenna System Co-Location; Voluntary Best Practices, will void this determination. Any future construction or alteration, including increase to heights, power or the addition of other transmitters, requires separate notice to the FAA. This determination includes all previously filed frequencies and power for this structure.

This determination does include temporary construction equipment such as cranes, derricks, etc., which may be used during actual construction of a structure. However, this equipment shall not exceed the overall heights as indicated above. Equipment which has a height greater than the studied structure requires separate notice to the FAA.

This determination concerns the effect of this temporary structure on the safe and efficient use of navigable airspace by aircraft and does not relieve the sponsor of compliance responsibilities relating to any law, ordinance, or regulation of any Federal, State, or local government body.

A copy of this determination will be forwarded to the Federal Aviation Administration Flight Procedures Office if the structure is subject to the issuance of a Notice To Air Missions (NOTAM).

If you have any questions, please contact our office at (206) 231-2990, or paul.holmquist@faa.gov. On any future correspondence concerning this matter, please refer to Aeronautical Study Number 2024-AWP-5743-OE

Signature Control No: 621582492-624420431

(TMP)

Paul Holmquist

Specialist

Additional Condition(s) or Information for ASN 2024-AWP-5743-OE

Proposal: To construct and/or operate a(n) Crane to a height of 300 feet above ground level, 1500 feet above mean sea level.

Location: The structure will be located 2.33 nautical miles northeast of PHX Airport reference point.

Part 77 Obstruction Standard(s) Exceeded and Aeronautical Impacts, if any:

Section 77.17 (a) (2) by 100 feet - a height that exceeds 1400 feet above mean sea level within 2.33 nautical miles of PHX.

Section 77.17 (a) (3) by 73 feet - a height that increases a minimum instrument flight altitude within a terminal area (TERPS Criteria). The proposal would necessitate at Phoenix Sky Harbor Intl (PHX) Phoenix, AZ. ILS or LOC RWY 7R, Amdt 2D; ILS or LOC RWY 25L, Amdt 1H; ILS or LOC RWY 26, Amdt 1; ILS or LOC/DME RWY 7L, Amdt 11B; RNAV (GPS) Y RWY 7L, Amdt 1C; RNAV (GPS) Y RWY 7R, Amdt 1C; RNAV (GPS) Y RWY 25L, Amdt 2; RNAV (GPS) Y RWY 25R, Amdt 2C; RNAV (GPS) Y RWY 26, Amdt 3, increase Circling CAT B MDA from 1740 to 1860. NEH: 1427 AMSL. W/2C, from 1740 to 1800. NEH: 1440 AMSL.

Section 77.17 (a) (5) a height that affects an Airport Surface by penetrating:
Section 77.19 (a) Horizontal Surface by 216 feet as applied to PHX.

You must request a Notice to Air Missions (NOTAM) via website <https://oeaaa.faa.gov> at least three business days prior to the operation of this crane. You must also submit a cancel request when the crane work is complete, same directions. Please refer to this link for NOTAM filing directions: https://oeaaa.faa.gov/oeaaa/downloads/external/content/deskReferenceGuides/NOTAM%20Efile%20-%20Desk%20Reference%20Guide%20V_2018.2.0.pdf.-----//-----This structure would exceed the PHX VFR traffic pattern airspace in the Part 77 Conical Surface by 81 feet as defined in FAAO 7400.2, 6-3-8, Evaluating Effect on VFR Operations.

Preliminary FAA study indicates that the above mentioned structure would:

have no effect on any existing or proposed arrival, departure, or en route instrument/visual flight rules (IFR/VFR) minimum flight altitudes.

have no physical or electromagnetic effect on the operation of air navigation and communications facilities.

have no effect on any airspace and routes used by the military.

Based on this aeronautical study, the structure would not constitute a substantial adverse effect on aeronautical operations or procedures because it will be temporary. The temporary structure would not be considered a hazard to air navigation provided all of the conditions specified in this determination are strictly met.

As a condition to this Determination, the structure is to be marked/lighted in accordance with FAA Advisory circular 70/7460-1 M, Obstruction Marking and Lighting, flags/red lights-Chapters 3(Marked),4,5(Red),14(Temporary),&15.

Any failure or malfunction that lasts more than thirty (30) minutes and affects a top light or flashing obstruction light, regardless of its position, should be reported immediately to (877) 487-6867 so a Notice to Air Missions (NOTAM) can be issued. As soon as the normal operation is restored, notify the same number.

As a condition to this determination, the temporary structure must be lowered to the ground when not in use and during the hours between sunset and sunrise.

It is required that the FAA be notified 3 business days prior to the temporary structure being erected and again when the structure is removed from the site. Notification should be made to this office through your registered e-filing account. Notification is necessary so that aeronautical procedures can be temporarily modified to accommodate the structure.

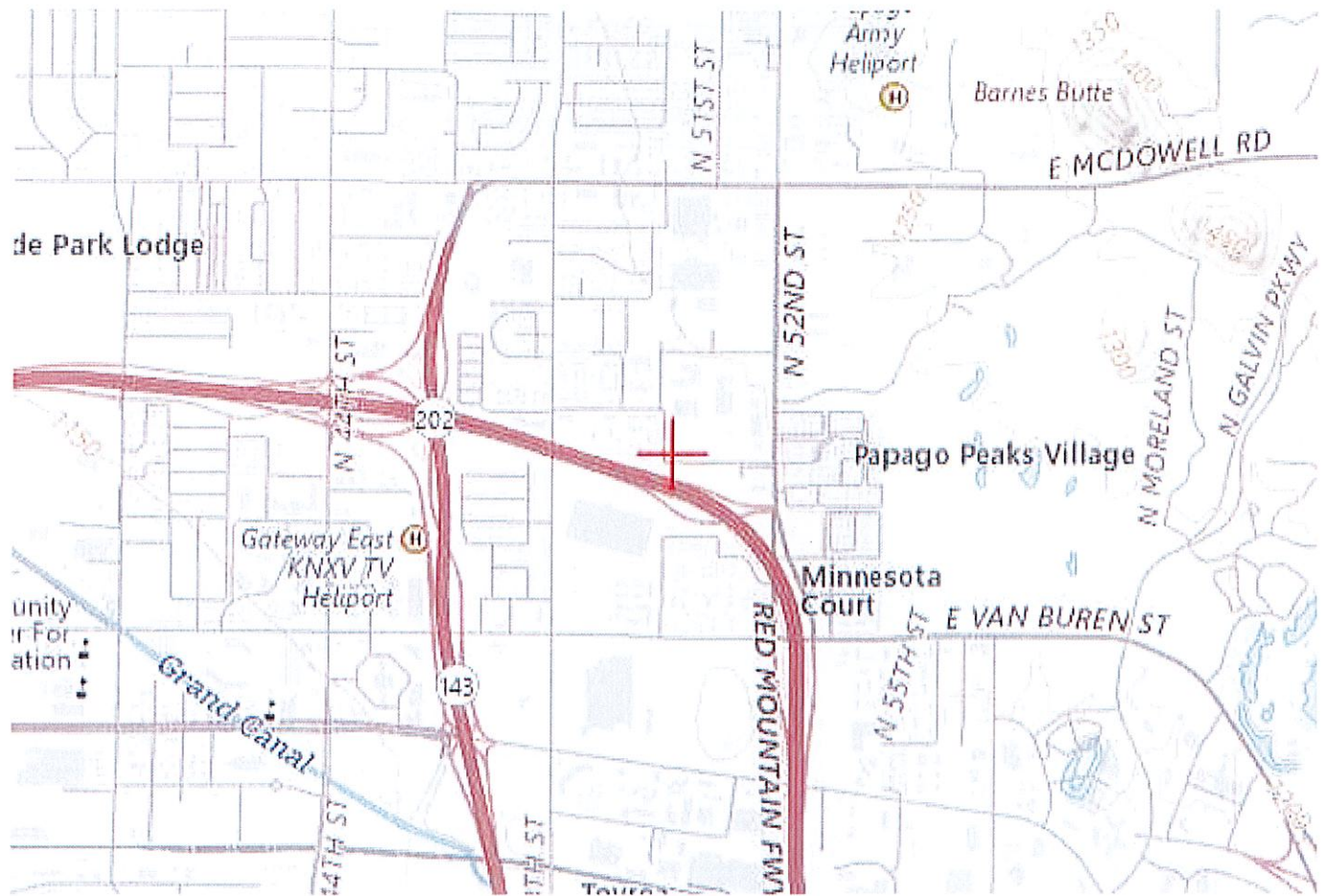
NOTIFICATION IS REQUIRED AGAIN THROUGH YOUR REGISTERED E-FILING ACCOUNT WHEN THE TEMPORARY STRUCTURE IS REMOVED FROM THE SITE FOR NOTICE TO AIR MISSIONS (NOTAM) CANCELLATION.

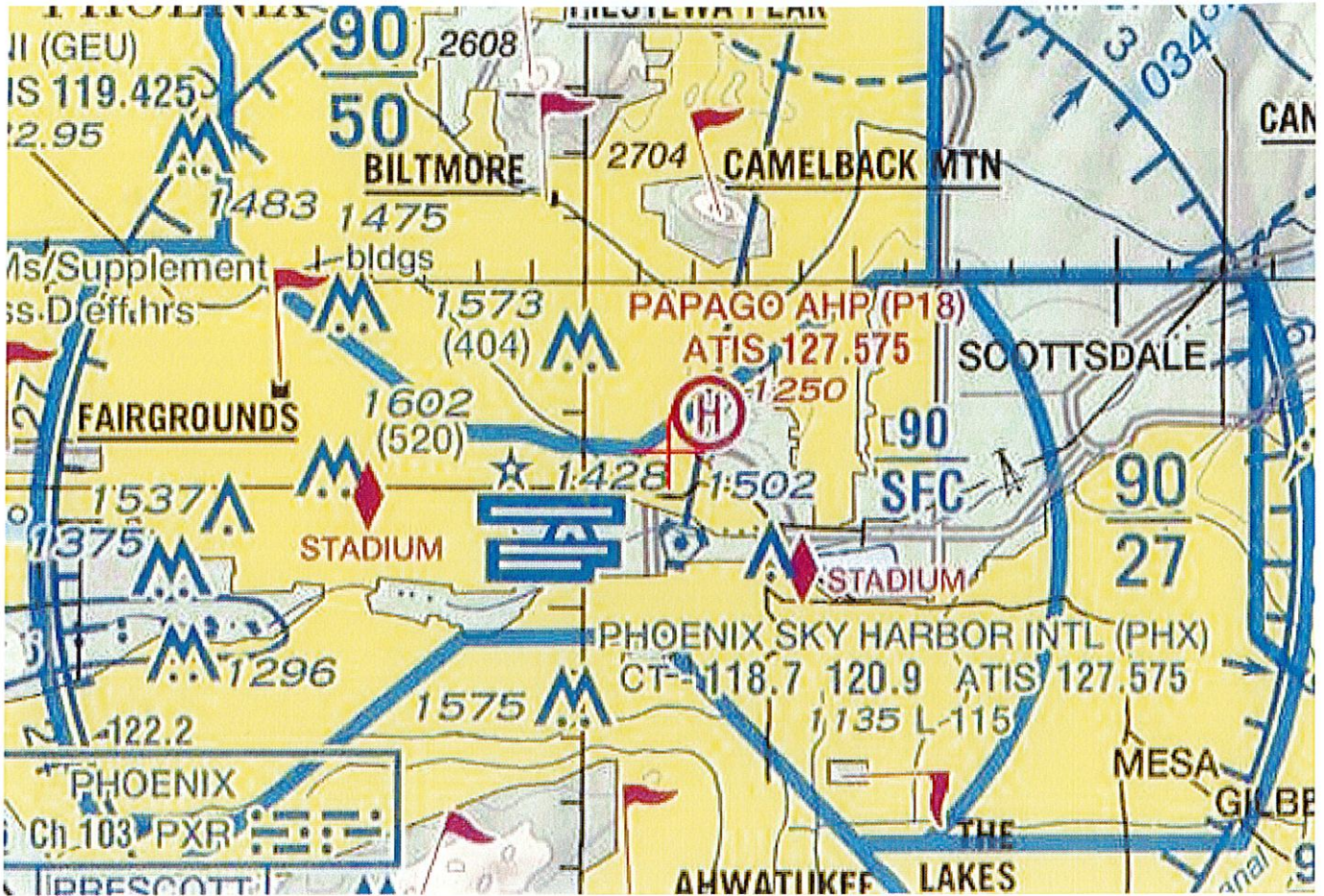
It is required that the manager of Phoenix Sky Harbor International Airport construction coordination office, at (602) 768-3996 be notified at least 3 business days prior to the temporary structure being erected and again when the structure is removed from the site.

It is required that the manager of Phoenix ATCT/TRACON at 602-306-2569 or 602-306-2514 be notified at least 3 business days prior to the temporary structure being erected and again when the structure is removed from the site. Additionally, please provide contact information for the onsite operator in the event that Air Traffic Control requires the temporary structure to be lowered immediately.

This determination expires on 12/13/2025 unless extended, revised, or terminated by the issuing office.

NOTE: REQUEST FOR EXTENSION OF THE EFFECTIVE PERIOD OF THIS DETERMINATION MUST BE E-FILED AT LEAST 15 DAYS PRIOR TO THE EXPIRATION DATE. AFTER RE-EVALUATION OF CURRENT OPERATIONS IN THE AREA OF THE STRUCTURE TO DETERMINE THAT NO SIGNIFICANT AERONAUTICAL CHANGES HAVE OCCURRED, YOUR DETERMINATION MAY BE ELIGIBLE FOR ONE EXTENSION OF THE EFFECTIVE PERIOD.







Mail Processing Center
Federal Aviation Administration
Southwest Regional Office
Obstruction Evaluation Group
10101 Hillwood Parkway
Fort Worth, TX 76177

Aeronautical Study No.
2024-AWP-5743-OE
06/13/2024 03:03 PM

DURATION: TEMPORARY
DESCRIPTION: crane for data center
START DATE: 06/17/2024
COMPLETION DATE: 12/13/2024
ESTIMATED
NUMBER OF DAYS: 180
TIME OF ARRIVAL: 0600 Mountain (UTC -7:00)
ACCURACY: 4D
LATITUDE: 33-27-24.91N
LONGITUDE: 111-58-25.57W
CITY: phoenix STATE:AZ
LOCATION: 7824 FEET FROM RWY PHX-26 (DIRECT DISTANCE)
HEIGHT: 300 AGL
1500 AMSL
OIT RESPONSE: (2024-AWP-5743-OE) At 1500 AMSL, 4D, Phoenix Sky Harbor Intl (PHX) Phoenix, AZ. ILS or LOC RWY 7R, Amdt 2D; ILS or LOC RWY 25L, Amdt 1H; ILS or LOC RWY 26, Amdt 1; ILS or LOC/DME RWY 7L, Amdt 11B; RNAV (GPS) Y RWY 7L, Amdt 1C; RNAV (GPS) Y RWY 7R, Amdt 1C; RNAV (GPS) Y RWY 25L, Amdt 2; RNAV (GPS) Y RWY 25R, Amdt 2C; RNAV (GPS) Y RWY 26, Amdt 3, increase Circling CAT B MDA from 1740 to 1860. NEH: 1427 AMSL. W/2C, from 1740 to 1800. NEH: 1440 AMSL.
AT-OEG MITIGATION:
ONSITE CONTACT: Paul Cerny 602-284-2546
COMMENTS: