

NOTICE OF NOTAM PUBLICATION

To: PHX NOTAM NOTIFICATION GROUP DISTRIBUTION

Date: 03/07/2025

From: DAGOBERTO HINOJOS
Aviation Supervisor II-Operations, (602) 273-2008

Subject: **PHX NOTAM #105-2025**

FAA NAS NOTAM # 03/031

OBSTRUCTION – 210' CRANE

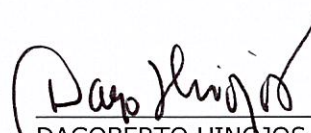
USE CAUTION FOR A FLAGGED AND LIGHTED CRANE 210' AGL, 1,344' MSL AND LOCATED 4,070 FEET SOUTHEAST OF THE RUNWAY 25R THRESHOLD.

EFFECTIVE: TUESDAY, MARCH 11, 2025 FROM 0600 (L) UNTIL 1659 (L).

CRANE

COORDINATES:
33-25-30.00N
111-58-55.00W




DAGOBERTO HINOJOS
Aviation Supervisor II- Operations

Smiley Lifting Solutions- Brandon Slater (602 571 6738)

2024-AWP-9456-OE

(4,070' SE RWY 25R & .67NM SE RWY 25R)

PHX NOTAMS IN EFFECT: # 001-2025, 002-2025, 003-2025, 004-2025, 005-2025, 006-2025, 016-2025, 017-2025, 018-2025, 019-2025, 020-2024, 021-2025, 080-2025, 098-2025, 099-2025, 100-2025, 102-2025, 103-2025, 104-2025 AND 105-2025.

TO VIEW ALL CURRENT NOTAMs FOR PHX PLEASE VISIT: <http://notams.aim.faa.gov/notamSearch/> (USE LOCATION SEARCH WINDOW AND TYPE IN PHX)

PHX USE ONLY:

REVIEWED BY: 

CANCELLED ON: DATE:

TIME:

FSS Operator Initials:



Mail Processing Center
 Federal Aviation Administration
 Southwest Regional Office
 Obstruction Evaluation Group
 10101 Hillwood Parkway
 Fort Worth, TX 76177

Aeronautical Study No.
 2024-AWP-9456-OE
 Prior Study No.
 2014-AWP-3186-OE

Issued Date: 08/08/2024

Brandon Slater
 Smiley Lifting Solutions
 5326 W. Mohave St.
 Phoenix, AZ 85043

****DETERMINATION OF NO HAZARD TO AIR NAVIGATION FOR TEMPORARY STRUCTURE****

The Federal Aviation Administration has conducted an aeronautical study under the provisions of 49 U.S.C., Section 44718 and if applicable Title 14 of the Code of Federal Regulations, part 77, concerning:

Structure: Mobile Crane 4632/E/HAMMOND/LN/CMK/TV
 Location: Phoenix, AZ
 Latitude: 33-25-30.00N NAD 83
 Longitude: 111-58-55.00W
 Heights: 1134 feet site elevation (SE)
 210 feet above ground level (AGL)
 1344 feet above mean sea level (AMSL)

~~FILM 0800-1600~~
 4,070' SE Runy 25R
 .67NM SE Runy 25R
 Tue 3/11 0800-1000

This aeronautical study revealed that the temporary structure does exceed obstruction standards but would not be a hazard to air navigation provided the condition(s), if any, in this letter is (are) met:

****SEE ATTACHMENT FOR ADDITIONAL CONDITION(S) OR INFORMATION****

This determination is based, in part, on the foregoing description which includes specific coordinates, heights, frequency(ies) and power. Any changes in coordinates, heights and frequencies or use of greater power, except those frequencies specified in the Colo Void Clause Coalition; Antenna System Co-Location; Voluntary Best Practices, will void this determination. Any future construction or alteration, including increase to heights, power or the addition of other transmitters, requires separate notice to the FAA. This determination includes all previously filed frequencies and power for this structure.

This determination does include temporary construction equipment such as cranes, derricks, etc., which may be used during actual construction of a structure. However, this equipment shall not exceed the overall heights as indicated above. Equipment which has a height greater than the studied structure requires separate notice to the FAA.

This determination did not include an evaluation of the permanent structure associated with the use of this temporary structure. If the permanent structure will exceed Title 14 of the Code of Federal Regulations, part 77.9, a separate aeronautical study and FAA determination is required.

This determination concerns the effect of this temporary structure on the safe and efficient use of navigable airspace by aircraft and does not relieve the sponsor of compliance responsibilities relating to any law, ordinance, or regulation of any Federal, State, or local government body.

A copy of this determination will be forwarded to the Federal Aviation Administration Flight Procedures Office if the structure is subject to the issuance of a Notice To Air Missions (NOTAM).

If you have any questions, please contact our office at (206) 231-2990, or paul.holmquist@faa.gov. On any future correspondence concerning this matter, please refer to Aeronautical Study Number 2024-AWP-9456-OE

Signature Control No: 628103751-629573117

Paul Holmquist
Specialist

(TMP)

Additional Condition(s) or Information for ASN 2024-AWP-9456-OE

Proposal: To construct and/or operate a(n) Mobile Crane to a height of 210 feet above ground level, 1344 feet above mean sea level.

Location: The structure will be located 1.59 nautical miles east of PHX Airport reference point.

Part 77 Obstruction Standard(s) Exceeded and Aeronautical Impacts, if any:

Section 77.17 (a) (2) by 10 feet - a height that exceeds 1334 feet above mean sea level within 1.59 nautical miles of PHX.

Section 77.17 (a) (3) by 125 feet - a height that increases a minimum instrument flight altitude within a terminal area (TERPS Criteria). The proposal would necessitate at Phoenix Sky Harbor INTL (PHX) Phoenix, AZ Obstacle penetrates Rwy 7R 40:1 departure surface 125 feet requiring Takeoff Minimums and (Obstacle) Departure Procedures, AMDT 6, Rwy 7R, increase ceiling and visibility from STD to 300-1 1/4 or STD with a minimum climb gradient increase from 200 to 375 feet per NM to 1500, W/2C 300-1 1/4 or STD with a minimum climb gradient increase from 200 to 292 feet per NM to 1500 NEH 1269 AMSL. (4D/2C) /// ILS OR LOC RWY 25L AMDT 1H, Increase S-LOC 25L MDA from 1520 to 1660 NEH 1281 AMSL, W/2C 1520 to 1600 NEH 1270 AMSL. /// RNAV (GPS) Y RWY 25L, AMDT2, Increase LNAV/VNAV DA from 1589 to 1679 W/1A 1589 to 1622 NEH 1225 AMSL (4D/1A) /// RNAV (GPS) Y RWY 25R AMDT 2C, Increase LNAV MDA from 1640 to 1660 NEH 1263 AMSL, W/2C NO IFR EFFECT.

Section 77.17 (a) (5) a height that affects an Airport Surface by penetrating:

Section 77.19 (a) Horizontal Surface by 60 feet as applied to PHX.

Section 77.19 (e) Transitional Surface by 99 feet as applied to PHX.

You must request a Notice to Air Missions (NOTAM) via website <https://oeaaa.faa.gov> at least three business days prior to the operation of this crane. You must also submit a cancel request when the crane work is complete, same directions. Please refer to this link for NOTAM filing directions: https://oeaaa.faa.gov/oeaaa/downloads/external/content/deskReferenceGuides/NOTAM%20Efile%20-%20Desk%20Reference%20Guide%20V_2018.2.0.pdf -----///-----This structure would exceed the PHX VFR traffic pattern airspace in the Part 77 Horizontal Surface by 60 feet as defined in FAAO 7400.2, 6-3-8, Evaluating Effect on VFR Operations.

Preliminary FAA study indicates that the above mentioned structure would:

have no effect on any existing or proposed arrival, departure, or en route instrument/visual flight rules (IFR/VFR) minimum flight altitudes.

have no physical or electromagnetic effect on the operation of air navigation and communications facilities.

have no effect on any airspace and routes used by the military.

Based on this aeronautical study, the structure would not constitute a substantial adverse effect on aeronautical operations or procedures because it will be temporary. The temporary structure would not be considered a hazard to air navigation provided all of the conditions specified in this determination are strictly met.

As a condition to this Determination, the structure is to be marked/lighted in accordance with FAA Advisory circular 70/7460-1 M, Obstruction Marking and Lighting, flags/red lights-Chapters 3(Marked),4,5(Red),14(Temporary),&15.

Any failure or malfunction that lasts more than thirty (30) minutes and affects a top light or flashing obstruction light, regardless of its position, should be reported immediately to (877) 487-6867 so a Notice to Air Missions (NOTAM) can be issued. As soon as the normal operation is restored, notify the same number.

As a condition to this determination, the temporary structure must be lowered to the ground when not in use and during the hours between sunset and sunrise.

It is required that the FAA be notified 3 business days prior to the temporary structure being erected and again when the structure is removed from the site. Notification should be made to this office through your registered e-filing account. Notification is necessary so that aeronautical procedures can be temporarily modified to accommodate the structure.

NOTIFICATION IS REQUIRED AGAIN THROUGH YOUR REGISTERED E-FILED ACCOUNT WHEN THE TEMPORARY STRUCTURE IS REMOVED FROM THE SITE FOR NOTICE TO AIR MISSIONS (NOTAM) CANCELLATION.

It is required that the manager of Phoenix Sky Harbor International Airport construction coordination office, at (602) 768-3996 be notified at least 3 business days prior to the temporary structure being erected and again when the structure is removed from the site.

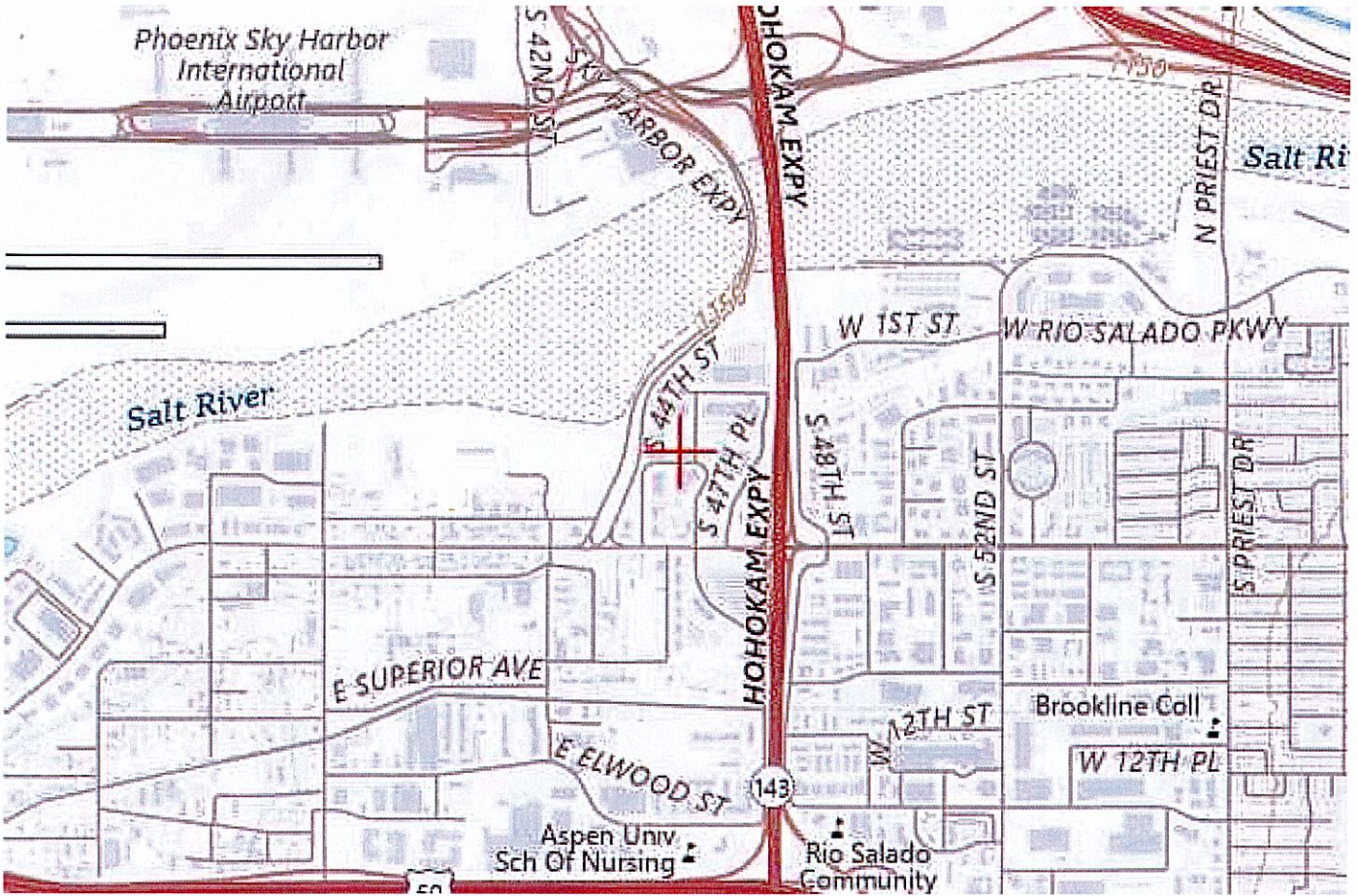
It is required that the manager of Phoenix ATCT/TRACON at 602-306-2569 or 602-306-2514 be notified at least 3 business days prior to the temporary structure being erected and again when the structure is removed from the site. Additionally, please provide contact information for the onsite operator in the event that Air Traffic Control requires the temporary structure to be lowered immediately.

This determination expires on 02/08/2026 unless extended, revised, or terminated by the issuing office.

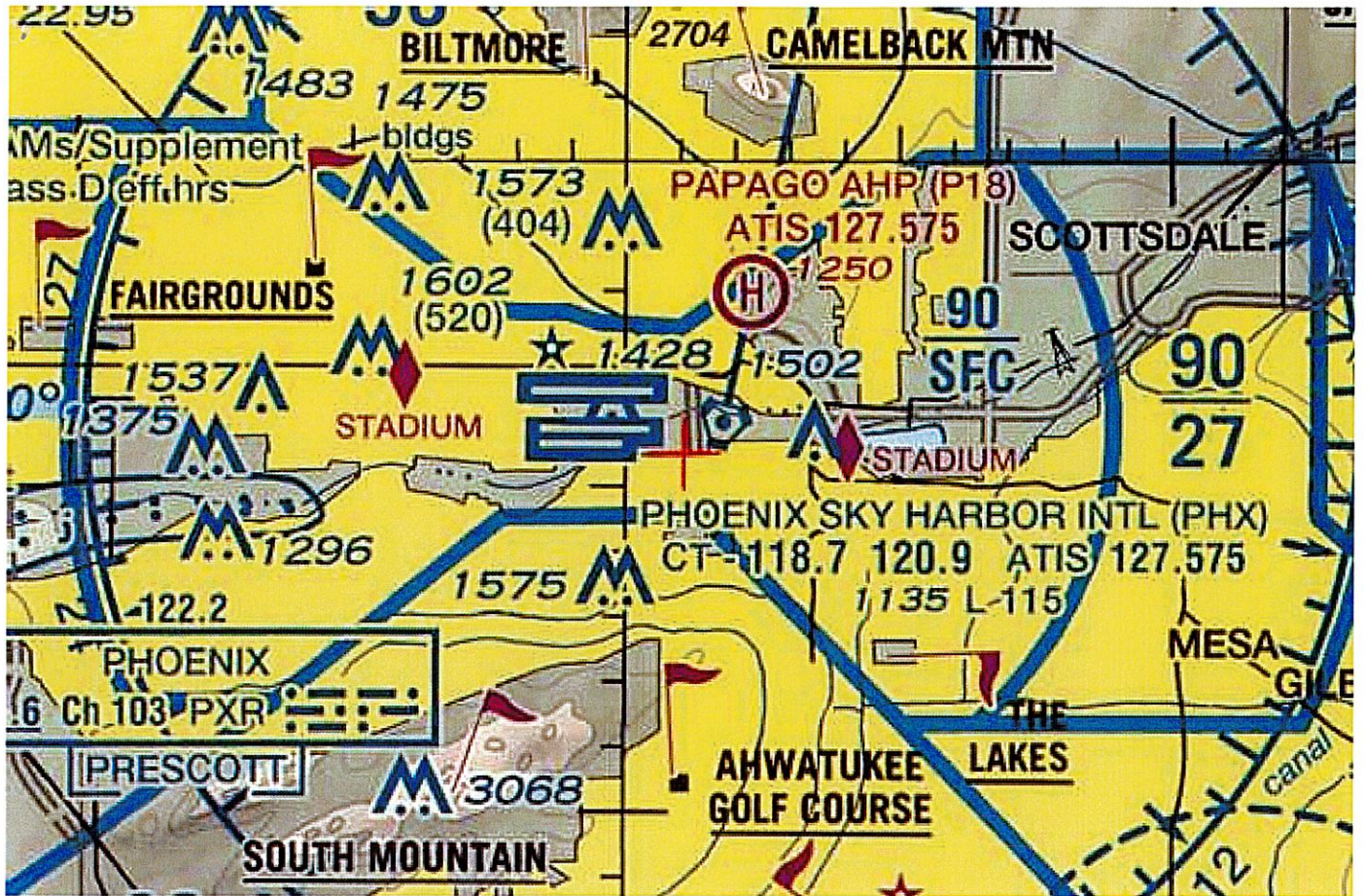
NOTE: REQUEST FOR EXTENSION OF THE EFFECTIVE PERIOD OF THIS DETERMINATION MUST BE E-FILED AT LEAST 15 DAYS PRIOR TO THE EXPIRATION DATE. AFTER RE-EVALUATION OF CURRENT OPERATIONS IN THE AREA OF THE STRUCTURE TO DETERMINE THAT NO SIGNIFICANT AERONAUTICAL CHANGES HAVE OCCURRED, YOUR DETERMINATION MAY BE ELIGIBLE FOR ONE EXTENSION OF THE EFFECTIVE PERIOD.

Lower crane during periods of low visibility. THIS CRANE OPERATION MUST BE COORDINATED AND APPROVED BY PHX AIRPORT OPERATIONS ((602) 768-3996) AND PHX AIR TRAFFIC CONTROL (602-306-2569 or 602-306-2514).

TOPO Map for ASN 2024-AWP-9456-OE



Sectional Map for ASN 2024-AWP-9456-OE





Mail Processing Center
Federal Aviation Administration
Southwest Regional Office
Obstruction Evaluation Group
10101 Hillwood Parkway
Fort Worth, TX 76177

Aeronautical Study No.
2024-AWP-9456-OE
Prior Study No.
2014-AWP-3186-OE
03/06/2025 12:02 PM

DURATION: TEMPORARY
DESCRIPTION: Remove and Replace 3 non working rooftop HVAC units in small localized operating area. Customer is requesting the lift take place asap.
START DATE: 03/11/2025
COMPLETION DATE: 03/11/2025
ESTIMATED
NUMBER OF DAYS: 1
TIME OF ARRIVAL: 8:00 AM Mountain (UTC -7:00)
ACCURACY:
LATITUDE: 33-25-30.00N
LONGITUDE: 111-58-55.00W
CITY: Phoenix STATE:AZ
LOCATION: 3459 FEET FROM RWY PHX-25R (DIRECT DISTANCE)
HEIGHT: 210 AGL
1344 AMSL
OIT RESPONSE: At 1344 AMSL, 4D Phoenix Sky Harbor INTL (PHX) Phoenix, AZ Obstacle penetrates Rwy 7R 40:1 departure surface 125 feet requiring Takeoff Minimums and (Obstacle) Departure Procedures, AMDT 6, Rwy 7R, increase ceiling and visibility from STD to 300-1 1/4 or STD with a minimum climb gradient increase from 200 to 375 feet per NM to 1500, W/2C 300-1 1/4 or STD with a minimum climb gradient increase from 200 to 292 feet per NM to 1500 NEH 1269 AMSL. (4D/2C) /// ILS OR LOC RWY 25L AMDT 1H, Increase S-LOC 25L MDA from 1520 to 1660 NEH 1281 AMSL, W/2C 1520 to 1600 NEH 1270 AMSL. /// RNAV (GPS) Y RWY 25L, AMDT2, Increase LNAV/VNAV DA from 1589 to 1679 W/1A 1589 to 1622 NEH 1225 AMSL (4D/1A) /// RNAV (GPS) Y RWY 25R AMDT 2C, Increase LNAV MDA from 1640 to 1660 NEH 1263 AMSL, W/2C NO IFR EFFECT.
AT-OEG MITIGATION:

ONSITE CONTACT: Brandon Slater (602) 571 - 6738

COMMENTS: