

**Phase 1a: Shoulders South of Taxiway A7**

Dates: Oct 21 - Nov 5

- \* Nightly Construction Work
- \* Nightly Partial TW A closures (between TW A7 and TW A9)
- \* No Access to South T-Hangar Apron during nightly closures

**Phase 1b: Shoulders Between TW A3 and TW A7**

Dates: Nov 5 - Nov 18

- \* Nightly Construction Work
- \* Nightly Partial TW A closures (between TW A3 and TW A7)

**Phase 1c: Taxiway Milling and Paving between TW A3 and TW A9**

Dates: Nov 12 21:00 through Nov 18 06:00

- \* 24/7 Nighttime and Daytime work
- \* Partial TW A and connector Taxiway closures
- \*\* Nov 12 21:00 - Nov 15 06:00 between TW A7 and TW A9 (No access to South T-Hangar Apron during these days)
- \*\* Nov 14 21:00 - Nov 18 08:00 between TW A3 and TW A7

**Phase 2: TW A Mill and Pave, Shoulders, TW A3, and Ramp 3**

Tentative Dates: Nov 18 - Dec 22

- \* Nightly Construction Work
- \* Two 57-hour work periods requiring runway closures
- \* Nightly Partial TW A closures between TWs A2 and A4
- \* Taxiway A3 and Ramp 3 closed for the duration of Phase 3

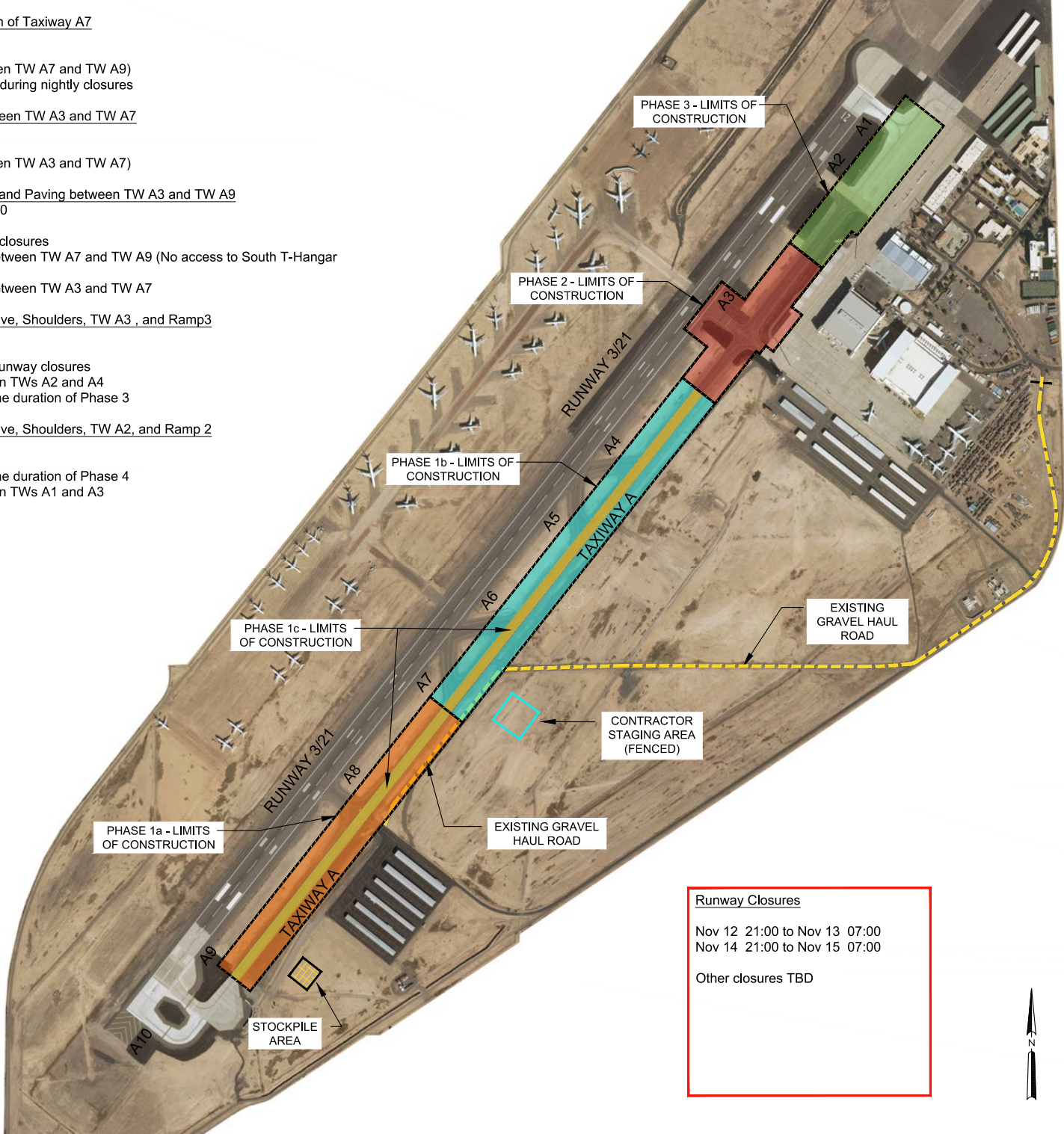
**Phase 3: TW A Mill and Pave, Shoulders, TW A2, and Ramp 2**

Tentative Dates: Jan 6 - Feb 3

- \* Nightly/Daily Construction Work
- \* Taxiway A2 and Ramp 2 closed for the duration of Phase 4
- \* Nightly Partial TW A closures between TWs A1 and A3

**LEGEND**

- CONSTRUCTION HAUL ROUTE
- CONSTRUCTION STAGING AREA
- STOCKPILE AREA
- PHASE 1a CONSTRUCTION AREA
- PHASE 1b CONSTRUCTION AREA
- PHASE 1c MILL & OVERLAY
- PHASE 2 CONSTRUCTION AREA
- PHASE 3 CONSTRUCTION AREA



**Runway Closures**

Nov 12 21:00 to Nov 13 07:00  
 Nov 14 21:00 to Nov 15 07:00

Other closures TBD

